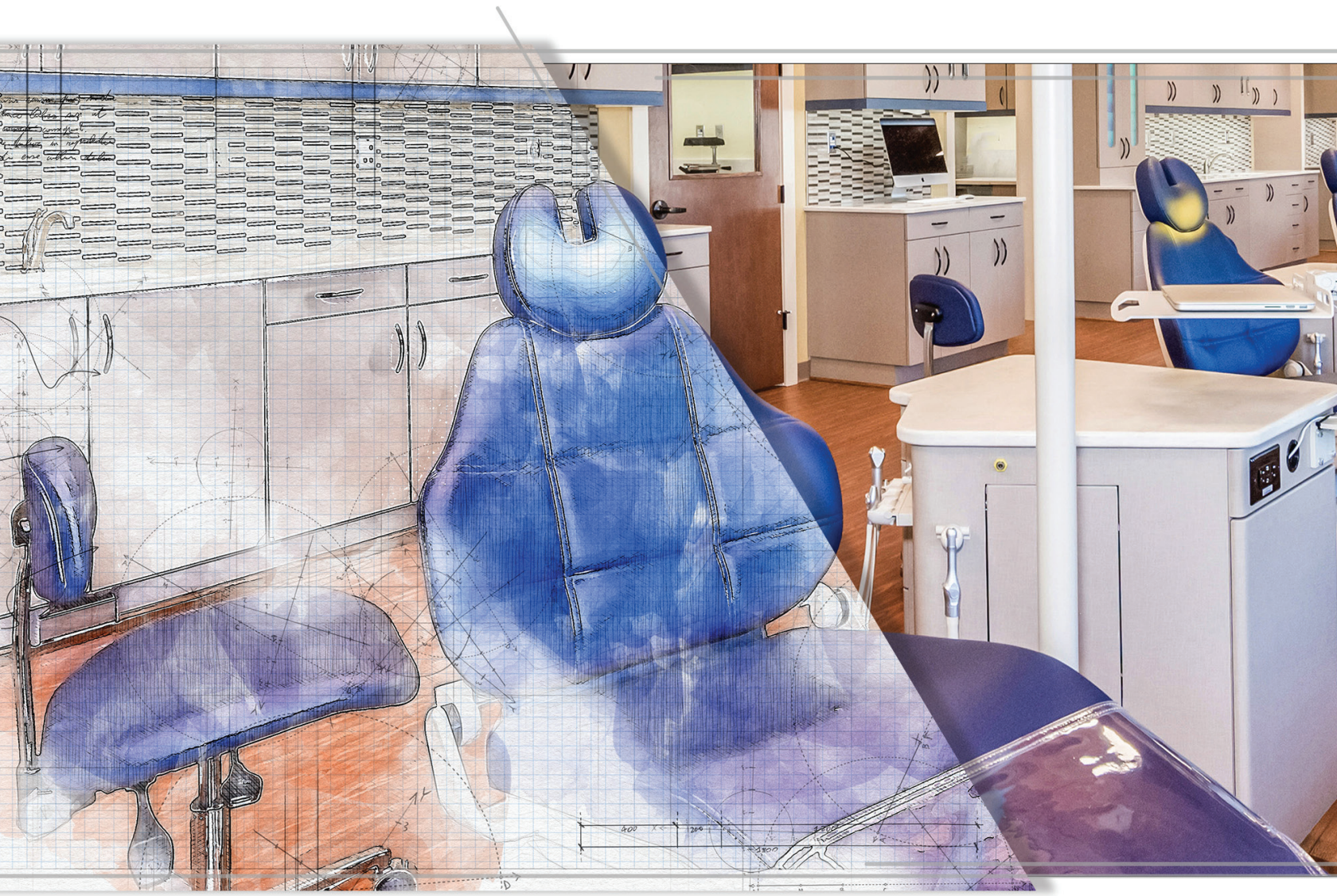


Built to Last. Built for You. Built by Boyd!

Dental Products Catalog



Your Office Design.

Built by Boyd!



**Boyd
Industries**

WE MAKE IT EASIER...

CUSTOMIZE • QUOTE • DELIVER

We exist to serve Healthcare professionals, by creating long lasting durable products that are highly efficient. Making it easier to create quality patient care.



CUSTOMIZATION

A variety of accessories and configurations, along with a full custom order process, ensure our customers get exactly what they want.



QUALITY

Boyd's products are manufactured in the USA and undergo rigorous quality inspections to meet our high standards.



SUPPORT

Highly knowledgeable Customer Service and Technical Support representatives combined with a national sales and service network provide assistance when you need it.



WARRANTY

Cabinets and chairs are backed by a one-year warranty in the USA and Canada.

Contents

Treatment Chairs	4
Examination Chairs	6
Pediatric Dentistry	8
Patient Chair Bases	9
Patient Chair	10
Doctor & Assistant Seating	11
Doctor & Assistant Seating	12
Delivery Units	16
Retraction Units	18
Concealed Delivery Units	19
Choose Your Color	20
Rear Delivery Systems	21
Delivery System Accessories	22
Chair Mount Systems For Ease & Economy	22
Delivery System Organizer	23
Self-Contained Water Systems	24
Monitor Mounts	26
Examination Lights	28
Complete Your Practice	29
The Boyd Product Warranty	31

Innovation • Integrity • Dependability • Respect • Loyalty

Treatment Chairs

Your Patients—At Ease.

The **M3000LS** is Boyd's most popular orthodontic treatment chair now offering a variety of features at an affordable price. Unique to the M3000LS is the vertical lift column base which sits 2" lower in the home position than its predecessor M3000LC, allowing a greater range of height to be adjusted for maximum ergonomic positioning. In addition to enhanced seat positioning, the M3000LS reclines 35% faster which allows your appointments to run more efficiently.



Putty Frame, Standard Foam and Vinyl PN: 100-3305
 Black Frame, Standard Foam and Vinyl PN: 100-3305B
 Shown with Grand Sierra, D Style Upholstery, FH317 Headrest,
 Putty Color Base.

Low Voltage DC Actuators (motors)

Provide precise, smooth and quiet movement for patient positioning.

Boltaflex Upholstery

Coated with PreFixx™ protective finish for easy cleaning, durability and color fast. Engineered to resist staining caused by common disinfecting agents. Back and seat stitching options available.

Contoured One-piece Seat

Ergonomically designed for patient comfort and easy removal for cleaning or replacement.

Programmable Foot Control

Digital technology operates the chair movements. Two, 3-way switches control the one-touch operation of three programmed seating preferences, return to home position and an additional button switch to control an attached Examination Light. In addition, one or more manual override levers adjust the back position or elevation.

Steel Frame and Base Construction

All components are painted using durable, powder-coat process to provide years of corrosion and rust protection. Frame and bases are available in putty or black.

The Boyd team is proud to be awarded Orthotown Magazine's **Townie Choice Award** for "Best Patient Chairs" from 2013-17, and "Best Operatory Equipment Overall" from 2018-2022. This award voted upon by doctors and their staffs is especially gratifying as acknowledgment of the quality and craftsmanship that goes into every one of our products.



M3000FB features a fixed pedestal base with Boyd's programmable foot control.

Putty Frame, Standard Foam and Vinyl
 PN: 100-3000
 Black Frame, Standard Foam and Vinyl
 PN: 100-3000B
 Shown with Grand Sierra, D Style Upholstery,
 FH307 Headrest, Black Color Base,
 putty color base



M300X is our most economical chair, featuring a fixed pedestal base and motorized reclining back.

Putty Frame, Standard Foam and Vinyl
 PN: 100-3020
 Black Frame, Standard Foam and Vinyl
 PN: 100-3020B
 Shown with Grand Sierra, B Style Upholstery, FH317 Headrest,
 Putty Color Base.

Add an Arm Optional armrests are available for all M3000 and M3010 series chairs. The arms can be lowered to allow the patient easy entry and exit from chair.

Putty Trim, Armrest, Right and Left
 PN: 68-2200
 Black Trim, Armrest, Right and Left
 PN: 68-2200B



Examination Chairs

Consultations With Comfort.

The **M3010LS**, exam / consultation chair, offers increased ergonomic positioning for doctors, office staff, and patients that now sits lower at the home position than previous models. For increased office efficiency, the M3010LS reclines faster is versatile and more efficient for conducting routine exams or consultations.



Putty Frame, Standard Foam and Vinyl PN: 100-3315
 Black Frame, Standard Foam and Vinyl PN: 100-3315B
 Shown with upgraded Ultraleather Pro, Memory Foam Style Upholstery, FH 300 Headrest, Putty Color Base.

Boltaflex Upholstery

Coated with PreFixx™ protective finish for easy cleaning, a and color fast. Engineered to resist staining caused by common disinfecting agents. Back and seat stitching options available.

Synchronized Drop-toe Seat

Designed to raise and lower in unison with back movement.

Low Voltage DC Actuators (motors)

Provide precise, smooth and quiet movement to position the patient.

Programmable Foot Control

Digital technology operates the chair movements. Two 3-way switches control the one-touch operation of three programmed seating preferences, return-to-home position and hands-free operation of a chair-mounted Examination Light. In addition, one or more manual override levers adjust the back position or elevation.

Steel Frame and Base Construction

All components are painted using a durable powder-coat process to provide years of corrosion and rust protection. Frame and bases are available in putty or black.

The *award-winning* M3010 series is perfect for offices where space may be a constraint or in consultation rooms. The drop-toe design provides the most natural seated position for patients during consultations or minor exams. Combine with Ultraleather Pro™ upholstery and memory foam padding for additional patient comfort.



E530 & E535 are your records room solution. Available in manual pump or motorized lift base, these chairs will provide years of service. Both chairs feature durable steel frames, ergonomic winged backs, manually synchronized back and toe sections, adjustable armrests and LL69 double-articulating headrests.

The E530 features a manual pump base for vertical lift.
 Putty Frame, Standard Foam and Vinyl PN: 100-5307
 Black Frame, Standard Foam and Vinyl PN: 100-5307B

The E535 features an electric motor for vertical lift.
 Available in Black Frame only, Standard Foam and Vinyl
 PN: 100-5357B

M3010FB features a fixed pedestal base with Boyd's programmable foot control.
 Shown with Grand Sierra "Almond", D Style Upholstery, FH317 Headrest, Black Color Base.

Putty Frame, Standard Foam and Vinyl
 PN: 100-3010
 Black Frame, Standard Foam and Vinyl
 PN: 100-3010B

Pediatric Dentistry

Comfort For Children.

P3000LS



Boyd's **P3000LS** Treatment Chair is ideal for pediatric and general dentistry addressing the increasing need for youth oriented dental treatment. This model uses the same base and motor configuration as the current M3000LS but will come standard with arms and single articulating headrest. With the seat height at 19" it is ideal for pediatric dental offices and certain general dentistry applications. Boyd's high reliability design equates to lower cost of ownership and minimizes scheduling disruption caused by mechanical failure. This is what we mean when saying "Built to Last!"

Putty PN: 100-3040
Black PN: 100-3040B

Shown with Headrest: AH-300 Articulating, Flat Magnetic, Vinyl, Std Foam, Black.

PB4000



Boyd's Pedo Benches provide an alternative to chairs for treating children. Our benches are adaptable platforms that can be easily modified to meet your specific requirements. Bench tops on both models rise at the mid-section to make the patient more comfortable and aids in proper positioning. Both models come with a single articulating headrest, foot protector, full extension soft-close drawers with under mount glides and under toe compartment for additional storage.

Drawers Maple dovetailed drawer box with soft close drawer glides and storage compartment at the foot of the bench come standard on Boyd Peds benches.

PB4000 is a fully instrumented bench, featuring an automatic delivery system on a pivoting holder bar.

Putty Trim, (2) HP Auto PN: 100-4800
Black Trim, (2) HP Auto PN: 100-4800B
Putty Trim, (2) HP Auto, Clean Water System PN: 100-4800CW
Black Trim, (2) HP Auto, Clean Water System PN: 100-4800CWB
Custom Bench Design in Putty PN: 100-4815
Custom Bench Design in Black PN: 100-4815B

Shown with AH300 headrest and Ultraleather "Wet Sand" (291-3491) upholstery.

PB4001



Storage drawers

Storage component located in toe end

PB4001 is an economical bench that works well in operatory settings using Boyd rear delivery.

Putty Trim PN: 100-4804
Black Trim PN: 100-4804B
Custom, Non-Instrumentation in Putty PN: 100-4810
Custom, Non-Instrumentation in Black PN: 100-4810B

Shown with Vista "Cardinal" (54056 old # 514978) upholstery, FH327 headrest, Black Trim.

BT-281



BT-281 Stainless Steel Instrument Tray 10"x15" (optional). Mounts 18" above the floor on bench, with pivot pin to rotate right and left under the head of the patient.

Rigid arm mount includes bracket with two arms.

Putty Trim PN: 95-9155
Black Trim PN: 95-9155B

Patient Chair Bases

Put A New Spin On It.

Boyd offers several base configurations and options to fit your functional specifications. All bases are rated for 500 lbs of lifting capacity to assure years of durable service.



Swivel Base

(Optional) Provides 90 degrees of travel from center (180 degrees total) with locking brake lever located at the 12 o'clock position.

Putty PN: 95-0533
Black PN: 95-0533B



M300X Fixed column with non-programmable foot control.



M3000FB/M3010FB Fixed column with programmable foot control.



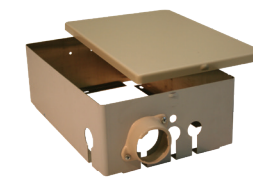
M3000LS/M3010LS

Motorized vertical lift column with programmable foot control.



Floor Box Options

Boyd offers 2 different types of utility boxes. The Above Grade Utility Box streamlines your utility access while promoting clinic safety. The UC-1000 Below Grade Utility Box saves time and money by taking the guesswork out of utility locations for your delivery system.



Above Grade Utility Box
PN: 20-5382K/20-5382BK



UC-1000 Below Grade Utility Box
PN: 20-5385

Patient Chair

Headrests & Upholstery Styles

Boyd exam chairs come standard with extendable fixed headrests. Headrests can be upgraded to articulating headrests for added flexibility.

FIXED HEADRESTS



FH307 Flat extendable.
Putty PN: 67-1307
Black PN: 67-1307B



FH327 Flat extendable with ponytail slot.
Putty PN: 67-1327
Black PN: 67-1327B



FH300 Flat extendable with magnetic pillow.
Putty PN: 67-1300
Black PN: 67-1300B



FH317 Flat extendable with "V" pillow.
Putty PN: 67-1317
Black PN: 67-1317B

*Articulating headrests are standard in pediatric benches and P3000LS chair.

UPGRADE HEADRESTS ARTICULATING



AH307 Flat articulating.
Putty PN: 67-1308
Black PN: 67-1308B



AH317 Flat articulating with "V" pillow.
Putty PN: 67-1318
Black PN: 67-1318B



AH300 Flat articulating with magnetic pillow.
Putty PN: 67-1301
Black PN: 67-1301B

UPHOLSTERY STYLE



"A" Style
Cross stitch back and seat.



"B" Style
Cross stitch back, side stitched seat.



"D" Style
Side stitched back and seat.



"MF" Memory Foam
Side stitched back and seat.

Embroidery Option

Make it your own. Add your unique brand or design to the toe section of your treatment chair. Beautifully stitched with your practice name or logo.



Doctor & Assistant Seating

Ergonomic, Stylish & Award-Winning.



ortho
townie
choice
awards®

Boyd's stools are among the Boyd products selected by practicing Orthodontists for a **Townie Choice Award** and featured in *Orthotown* magazine. Boyd's stools have been a winner for ten years in a row, and were included in our **2022 TCA** for "Best Operator Equipment Overall." We offer a wide variety of doctor and assistant seating models to fit your office needs. We understand the importance of ergonomic design to help reduce doctor and staff fatigue in a busy practice.



The **BOS-279** is Boyd's most popular seat, offering an ergonomic saddle seat, adjustable seat height and tilt with a floating lumbar support back. The seat is designed for a wide range of adjustments to fit your most comfortable seated position.

BOS-279 Doctor height

Seat height range from
17" - 22"
PN: 200-2791

BOS-279 Assistant height

Seat height range from
20" - 28"
PN: 200-2792

Shown with upgraded Ultraleather "Wet Sand" (291-3491) upholstery.

Fully adjustable padded backrest
For proper lumbar support.

Seat tilt
Allow adjustment to the proper pelvic/spine alignment.

Doctor or assistant height pneumatic cylinders
To select the proper height for you and your staff.

Five neoprene coated dual-wheel casters
For smooth movement, reduce office noise and prevent damage to flooring.

Wide ergonomic seat
For added stability and comfort.

Doctor & Assistant Seating

Ergonomic, Stylish, & Award-Winning.



BOS-46 Features round seat.
 Doctor seat height 19" - 24"
 PN: 200-4610
 Assistant seat height 22" - 30"
 PN: 200-4620

BOS-248 Features round seat with adjustable back.
 Doctor seat height 19" - 24"
 PN: 200-2481
 Assistant seat height 22" - 30"
 PN: 200-2482

BOS-249 Features round seat with adjustable seat angle, adjustable back with floating lumbar support.
 Doctor seat height 19" - 24"
 PN: 200-2491
 Assistant seat height 22" - 30"
 PN: 200-2492



OPTIONS
 Fixed Foot Ring for all models (*shown*)
 PN: 60-6400
 Adjustable foot ring for all models
 PN: 60-6401



BOS-278 Features ergonomic saddle seat.
 Doctor seat height 17" - 22"
 PN: 200-2781
 Assistant seat height 20" - 28"
 PN: 200-2782

BOS-256 Features round seat, torso wrap arm and fixed foot ring. Right handed, assistant seat height 22" - 30"
 PN: 200-5672
 Left handed, assistant seat height 22" - 30"
 PN: 200-5673

BOS-257 Features round seat, adjustable back with lumbar support, torso wrap arm and fixed foot ring. Right handed, assistant seat height 22" - 30"
 PN: 200-5772
 Left handed, assistant seat height 22" - 30"
 PN: 200-5773

Delivery Systems

Pick The Size & Features For Your Office.



C300 Exam Light

FS-1 Monitor Mount

M3000LS Treatment Chair

CSU356FLM Delivery System

Built for You. Boyd builds a variety of standard delivery unit models for either chair-side, rear or concealed delivery to meet your requirements for functionality and efficiency. The units are offered in a wide variety of laminate choices from manufactures such as Formica™ and Wilsonart™ to help express your style with an almost limitless selection of colors and grains. All units are FDA-listed devices and produced at our FDA registered facility where we use the highest quality materials to ensure many years of service.

But it doesn't stop there. If our standard delivery unit models don't fit your needs, just let us know. Boyd offers free custom design consultation to work with you in designing the delivery unit of your choice. We can help meet the size, features, and options of your specification while maintaining the high quality and craftsmanship that our standard units are known for. Contact us at **727.471.5072** to arrange a consultation with one of our designers.

CSU456SQ: Boyd's next generation chair side unit has got it all: Corian™ work surface, internal and external medical-grade A/C power receptacles, easy access water bottle — in addition to the top-quality features our award-winning line of clinical side units are known for. This state-of-the-art unit, designed with the latest regulations in mind and can be personalized to fit your design aesthetic.

CSU456SQ-FLM Free standing unit (pictured)

Right handed PN: 300-0456SQ
 Left handed PN: 356-0456SQL
 Clean water option, right handed
 PN: 300-0456SQCW
 Clean water option, left handed
 PN: 300-0456SQCWL

CSU456SQ-FS Full-length mobile unit

Right handed PN: 300-0457SQ
 Left handed PN: 300-0457SQL
 Clean water option, right handed
 PN: 300-0457SQCW
 Clean water option, left handed
 PN: 300-0457SQCWL



Lockable side-access door opens to Sharps container for secure disposal.

Counter top installed 1.7qt Sharps container conveniently-placed and under-mounted for a streamlined look, maximizing your work space.

Options:
 4" diameter waste chute and/or recessed 5" diameter Caviwipe container holder.

Automatic delivery system with two hand-pieces, HVE, saliva ejector and 3-way syringe. Choice of either straight or coiled tubing.

Plenty of A/C power receptacles to accommodate all your equipment. External 115v medical-grade duplex with USB ports receptacle and internal fused 115v ETL rated receptacle.



Top two drawers are push-to-open, allowing hands-free access and reducing glove disposal.

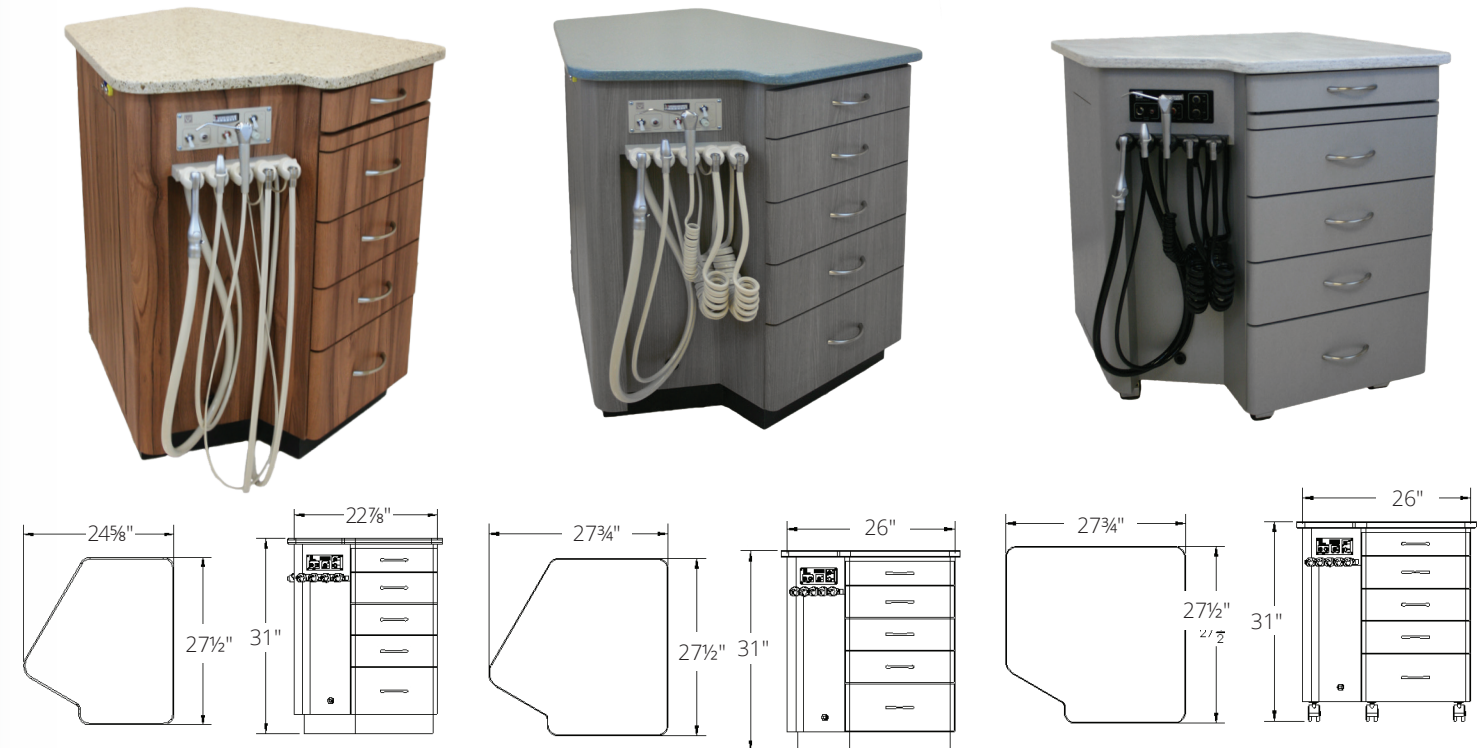
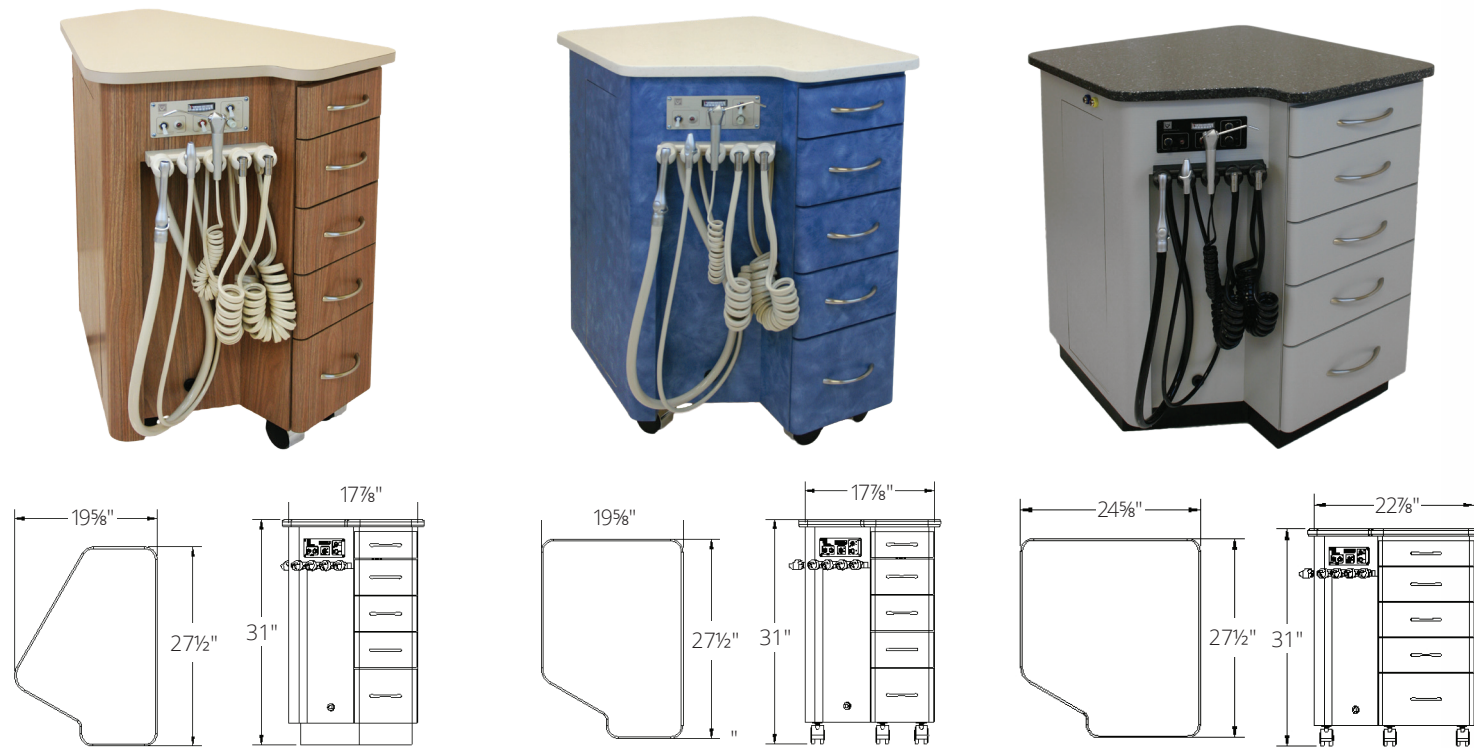
¾" high-grade plywood interior construction for increased durability and strength.

Mobile or Free-standing bases to suit your practice needs.

Office of Dr. Valerie Woo,
 NOVA Pediatric Dentistry and Orthodontics,
 Ashburn, Virginia.
 Office design & build by Arminco, Inc.

Delivery Units

Create The Perfect Delivery Unit For Your Office.



CSU351 is our narrowest series, fully instrumented chair side units, measuring less than 20" wide. The system offers all the standard features of our larger units but with a more compact footprint. The CSU-351's tapered design makes this a popular choice for smaller offices.

Shown as mobile unit with Wilsonart "Upton Walnut" (7971K-12) Laminate, Wilsonart "Khaki Brown" (D50-60) Laminate Top, Putty Coiled Tubing, Satin Nickel Handles.

CSU351-FS Free standing unit
Right handed PN: 351-0761
Left handed PN: 351-0761-L
Clean water options:
Right handed PN: 351-0761-CW
Left handed PN: 351-0761-CWL

CSU351-FLM Full-length mobile unit
Right handed PN: 351-0765
Left handed PN: 351-0765L
Clean water options:
Right handed PN: 351-0765CW
Left handed PN: 351-0765CWL

CSU351SQ has the same narrow footprint as the CSU351 but features a squared back, providing more countertop space and rear storage.

Shown as mobile unit with Wilsonart "Woolami Brush" (4746-60) laminate, Silestone "Vortium" top, putty coiled tubing, and satin nickel handles.

CSU351SQ-FS Free standing unit
Right handed PN: 351-0761SQ
Left handed PN: 351-0761SQ-L
Clean water option, right handed PN: 351-0761SQ-CW
Clean water option, left handed PN: 351-0761SQ-CWL

CSU351SQ-FLM Full-length mobile unit
Right handed PN: 351-0765SQ
Left handed PN: 351-0765SQL
Clean water option, right handed PN: 351-0765SQCW
Clean water option, left handed PN: 351-0765SQCWL

CSU356SQ provides all benefits of the CSU356 but features a squared back, providing more countertop space and rear storage.

Shown as free standing unit with Formica "Folkstone Sculpted Finish" (927-SP) laminate, Silestone "Zirconium" top, black coiled tubing, and satin nickel handles.

CSU356SQ-FS Free standing unit
Right handed PN: 356-0701-SQ
Left handed PN: 356-0701-SQL
Clean water option, right handed PN: 356-0701-SQCW
Clean water option, left handed PN: 356-0701-SQCWL

CSU356SQ-FLM Full-length mobile unit
Right handed PN: 356-0702SQ
Left handed PN: 356-0702SQL
Clean water option, right handed PN: 356-0702SQCW
Clean water option, left handed PN: 356-0702SQCWL

CSU356 series is our most popular series offering ample storage in a unit less than 25" wide. The CSU356's tapered design makes it a popular choice for offices of all sizes.

Shown as free standing unit with Formica "Oiled Walnut Naturelle Finish" (5487-NT) laminate, Silestone "Bamboo" top, putty straight tubing, stain nickel handles, and keyboard drawer flip down front.

CSU356-FS Free standing unit (pictured)
Right handed PN: 356-0701
Left handed PN: 356-0701L
Clean water option, right handed PN: 356-0701CW
Clean water option, left handed PN: 356-0701CWL

CSU356-FLM Full-length mobile unit
Right handed PN: 356-0702
Left handed PN: 356-0702L
Clean water option, right handed PN: 356-0702CW
Clean water option, left handed PN: 356-0702CWL

CSU362 series is our widest chair side delivery units offering loads of storage in a 27 3/4" wide unit. The CSU362's tapered design makes it a versatile choice for offices needing more operatory storage.

Shown as free standing unit with Formica "Weathered Ashed Woodbrush Finish" (8842-WR) laminate, Corian "Aqualite" top, putty coiled tubing, and satin nickel handles.

CSU362-FS Free standing unit
Right handed PN: 362-0701
Left handed PN: 362-0701-L
Clean water option, right handed PN: 362-0701CW
Clean water option, left handed PN: 362-0701CWL

CSU362-FLM Full-length mobile unit
Right handed PN: 362-0702
Left handed PN: 362-0702-L
Clean water option, right handed PN: 362-0702CW
Clean water option, left handed PN: 362-0702CWL

CSU362SQ series is our widest chair side delivery units offering loads of storage in a 27 3/4" wide unit. The tapered design makes this a versatile choice for offices needing more operatory storage.

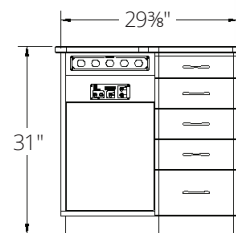
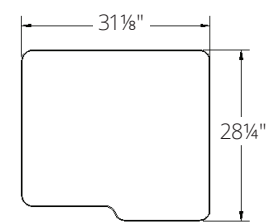
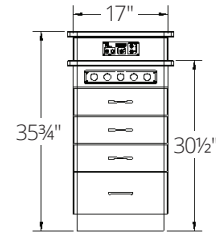
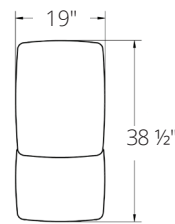
Shown as mobile unit with Wilsonart "Satin Stainless" (4830K-18) laminate, Corian "Arrowroot" top, black coiled tubing and satin nickel handles.

CSU362SQ-FS Free standing unit
Right handed PN: 362-0701-SQ
Left handed PN: 362-0701-SQL
Clean water option, right handed PN: 362-0701-SQCW
Clean water option, left handed PN: 362-0701-SQCWL

CSU362SQ-FLM Full-length mobile unit
Right handed PN: 362-0702SQ
Left handed PN: 362-0702SQL
Clean water option, right handed PN: 362-0702SQCW
Clean water option, left handed PN: 362-0702SQCWL

Retraction Units

Ideal For Rear Delivery Techniques.



CSU370SL retraction delivery system is a slim line version of the CSU370SQ measuring 19" wide for compact operatories. This versatile unit can be used for side or rear delivery. The CSU370SL includes a removable top for easy cleaning.

Shown as mobile unit with Wilsonart "Slate" (D91-60) Laminate, Corian "Noble Ecrú" top, and satin nickel handles.

CSU370SL-FS Free standing unit
 Left or right handed PN: 370-1102
 Clean water option left or right handed PN: 370-1102CW

CSU370SL-FLM Full-length mobile unit
 Left or right handed PN: 370-1101
 Clean water option, left or right handed PN: 370-0902SQCWL

CSU370SQ retraction delivery system used in pediatric or orthodontic offices. The mobile unit provides many of the same storage benefits of the CSU-3351 but with the ability to be moved into the ideal position for you and your staff. A removable top allows for easy cleaning.

Shown as mobile unit with Nevamar "Copper Fusion 2" (FN1002T) Laminate, Nevamar "Coconut Bark" (S5058T) Laminate Top.

CSU370SQ Free standing unit
 Right handed PN: 370-0901SQ
 Left handed PN: 370-0901SQL
 Clean water option:
 Right handed PN: 370-0901SQCWL
 Left handed PN: 370-0901SQCWL

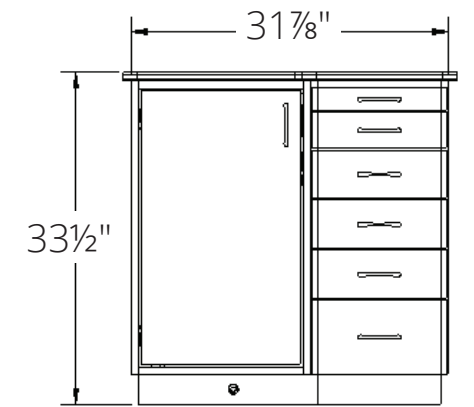
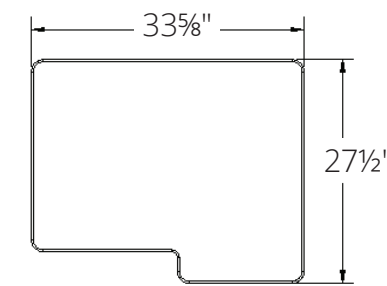
CSU370SQ-FLM Full-length mobile unit
 Right handed PN: 356-0902
 Left handed PN: 356-0902L
 Clean water option:
 Right handed PN: 356-0902CW
 Left handed PN: 356-0902CWL

Concealed Delivery Units

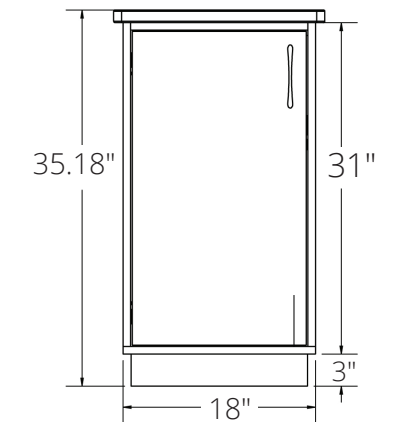
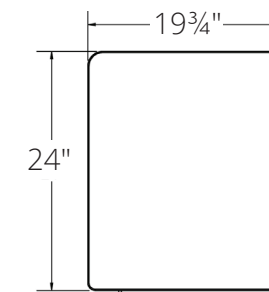
Unit For Visual Appeal.



CDU415



CDU425



CDU415 and CDU425 are Boyd's unique Concealed Delivery Units keeps dental hand pieces out of sight of young dental patients while making them easily accessible to dentists and their chair side assistants. The CDU was created out of Boyd's intimate understanding of the needs of the pediatric dentistry profession. They provide a fully instrumented chair side unit with all the standard features of our traditional chair side unit but with additional work surface and visual appeal.

Contact our Design Team at 727.471.5072 to learn how to integrate into custom-designed cabinetry.

The units features a fully instrumented pull-out drawer with floating work surface that includes two auto-on handpieces, HVE, Saliva Ejector, and 3-way syringe. The pocket style front door enables the door to be tucked away to prevent interference. The unit can be configured for Boyd's Clean Water System or 3rd party nitrous oxide system.

CDU415-FS Free standing unit
 Right handed PN: 330-070
 Left handed PN: 330-0701L
 Clean water option, right handed PN: 330-0701CW
 Clean water option, left handed PN: 330-0701CWL

CDU415-FLM Full-length mobile unit
 Right handed PN: 330-0702
 Left handed PN: 330-0702L
 Clean water option, right handed PN: 330-0702CW
 Clean water option, left handed PN: 330-0702CWL

CDU425 Free standing unit
 PN: 330-0425
 Clean water option PN: 330-0425CW

Choose Your Color

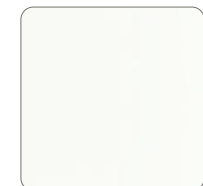
Customize Your Delivery Systems.

Office of CHT Orthodontics,
Hinsdale, Illinois.



CUSTOMIZE

Delivery Systems & Cabinetry with STANDARD SOLID SURFACE COLORS



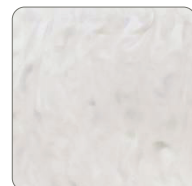
Designer White
D354SL



Frosty White
1573SL



Morning Ice
9204CE



Moon Geyser
9209CM



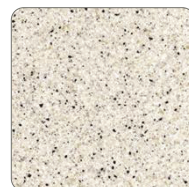
Avalanche Melange
9175ML



Grey Lace
9224SS



Blanco Riverstone
9137RS



Artic Melange
9070ML



Beige Tempest
1530TM



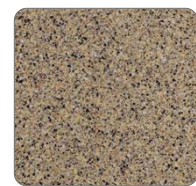
Pebble
9036EA



Titanium Grey
9222SS



Zen Gray
9115GS



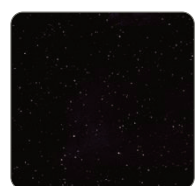
Quarry Melange
9041ML



Beachfront
9233SS



Midnight Melange
9091ML

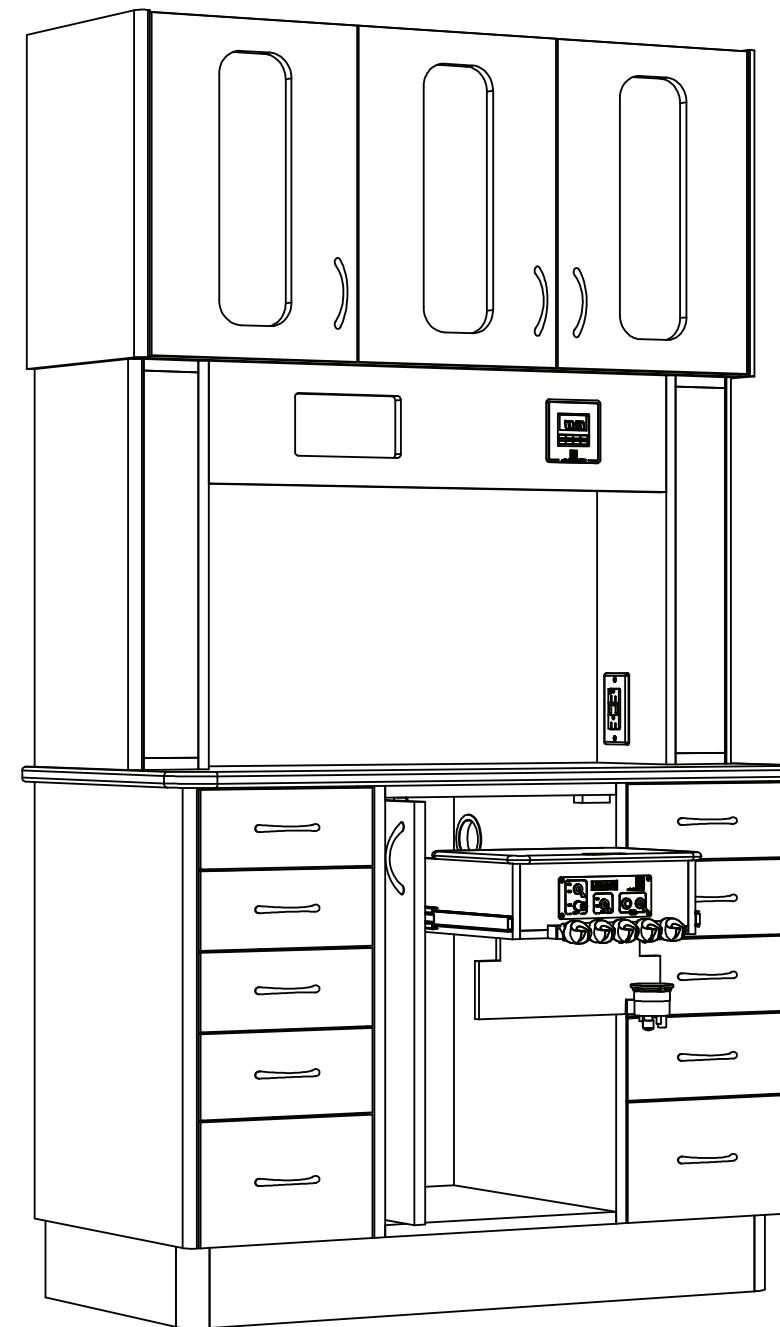


Black Onyx Mirage
9092MG

Rear Delivery Systems

Rear Delivery, 12 O'Clock Cabinets.

Like all Boyd cabinetry, our Rear Delivery Units (RDU) can be custom designed to meet your practice requirements. Standard units are designed to accommodate 4-handed dentistry by including an assistant package with our doctor package on the unit's articulating, retractable arm. Our RDU's are ergonomically designed, durable and versatile to adapt to practice requirements. Standard or custom units are built with Boyd's high level of craftsmanship. Experience our "Built by Boyd" quality!



Standard Features:

- Concealed, pull out rear delivery unit with pocket door, doctor instrumentation and small work surface.
- Self-contained, clean water system with 1 liter bottle
- Pocket door, on lower storage cabinet for customer-provided nitrous oxide unit
- One, five-drawer bank, with easy side cabinet access
- Durable ¾" Plywood interior construction
- Wilsonart™, and Formica™ laminate exteriors finishes
- Selection of standard Wilsonart™ Solid Surface countertop colors.
- 5/8" hardwood drawer boxes; 1mm edge banded drawer fronts; under-mount, full extension, self-close, drawer glides; concealed, soft-close, European-style door hinges; and 96mm bow style handles.

Optional Features:

- Upper cabinet pass-through
- Mask or glove box dispenser
- Stainless steel under mount sink
- Track-style monitor mount system
- LED task lighting
- Soap dispenser

Rear delivery unit

Putty tubing PN: 300-1300
Black tubing PN: 300-1300B

Custom rear delivery unit

Putty tubing PN: 300-1301
Black tubing PN: 300-1301B

Delivery System Accessories

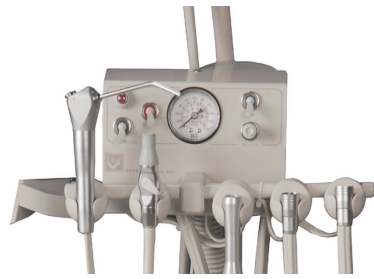
Chair Mount Systems For Ease & Economy.

* Must be connected to utilities via standard delivery unit. *



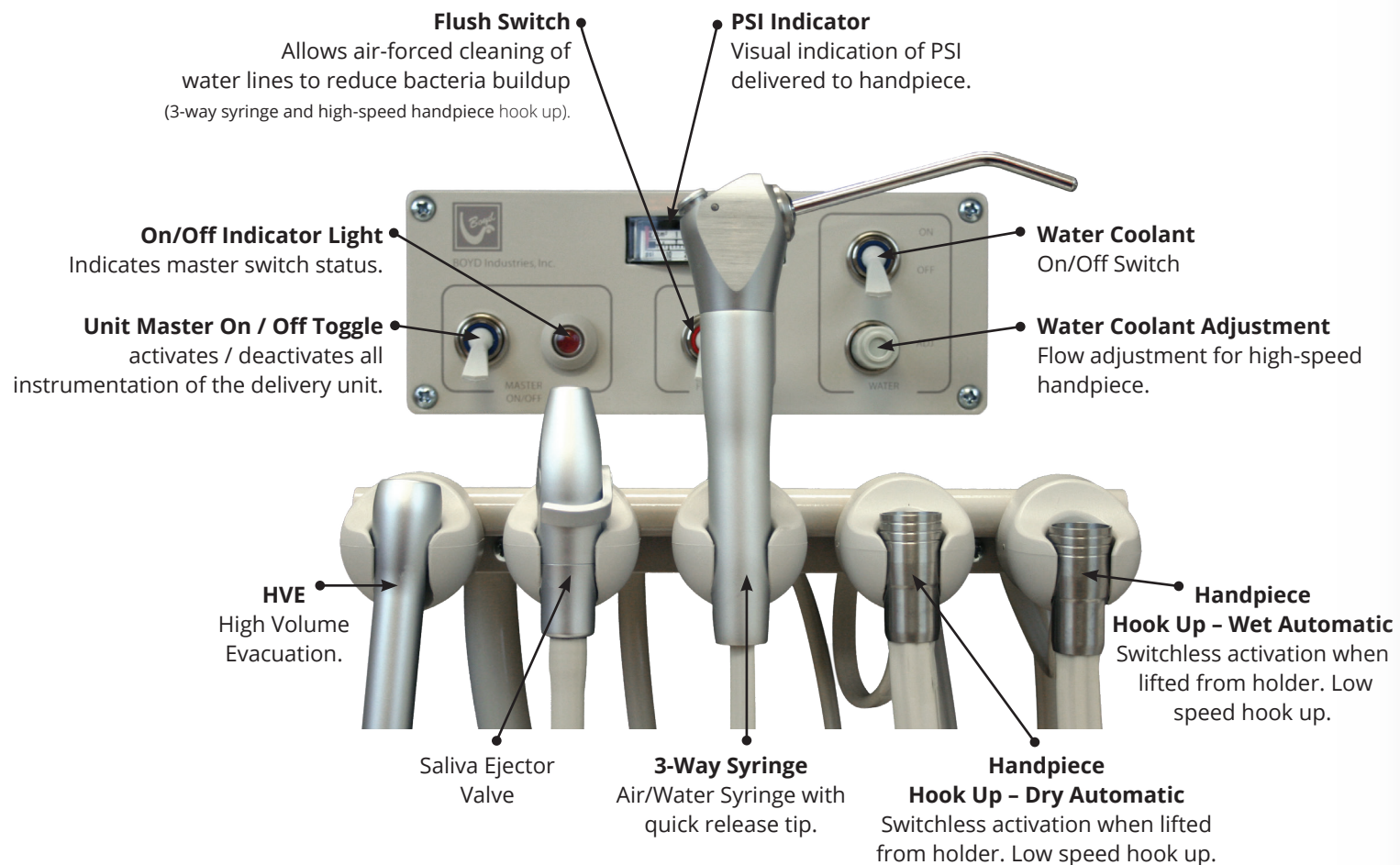
AP-11 Assistant Package
Standard features include: white swing mount holder bar with 3-way syringe, HVE, saliva ejector, and solids collector. Mounts on the right or left side of chair. Can be mounted on M300X, M3000 series and M3010 series chairs.

Right mount, putty PN: 95-2390 Left mount, putty PN: 95-2391
Right mount, black PN: 95-2390B Right mount, black PN: 95-2391B



CSU-320 Under Arm Delivery Unit
Standard features include: side chair mount, 150° swivel from chair side, low- and high-speed syringe with coiled tubing. Can be mounted on E530/E535, M300X, M3000 series and M3010 series chairs.

Models 530/535 Models 300X/3000/3010
Right mount, putty PN: 320-1020 Right mount, putty PN: 320-1022
Left mount, putty PN: 320-1021 Left mount, putty PN: 320-1023



3HP Auto System is available with a supplied water system or self-contained water system.

Delivery System Organizer

Organization Is Key.

Boyd delivery systems, whether chair side, rear delivery or concealed, can be customized to meet your functional requirements. Our sales team can work with you to design a unit accessorized with one or more of the many optional features Boyd has to offer. If you don't see it here – just ask! Boyd stocks a wide variety of components, laminates and solid surface materials to bring you many years of satisfaction and service.

Quick Disconnect
Air (Yellow) PN: 20-5575
Water (Blue) PN: 20-5574



Fiber Optic Handpiece
PN: 20-5884 / PN 20-5884B



Handpiece Bar & Bar Holders
Bar PN: 95-9941/95-9941B
Holders PN: 20-7100/20-7100B



Mask Box Holder Dispenser
Side Mount PN: 50-2109



Double Glove Box Holder Dispenser
Side Mount PN: 65-9139

Drawer Insert Organizers for cabinet models 356, 356SQ, 370SL, 370SQ and 456SQ, 4000, 4001.



Four Straight Pockets
PN: 50-0305



Three Small, Three Medium Pockets
PN: 50-0325



Two Large, One Long, Two Small Pockets
PN: 50-0355



Two Large, Two Small Pockets
PN: 50-0345



Five Straight Pockets
PN: 50-0315



Six Small, Three Medium Pockets
PN: 50-0335

Self-Contained Water Systems

Convenient, Organized & Sanitary.

Let Boyd help design the office of your dreams. Our designers are here to help put your vision to paper and our builders and installers make that vision a reality. Discover the standards that Boyd is known for, and why we proudly say Built by Boyd!



▲ Office of Dr. Emily Watson,
Warsaw Orthodontics,
Plymouth, Indiana.

The use of distilled or sterile water in the delivery unit aides in the prevention of mineral and other deposits that can build up in your system. Further, it eliminates the need for a back-flow check valve when the unit is plumbed to your commercial water source reducing expense and maintenance.

Model CWS-07 Self Contained Water System comes standard with a one liter bottle, mounting bracket, pressure adjustment and interconnect tubing. All units are designed for easy access to replenish water as needed.



Bottle located in toe compartment of PB4000



Bottle located in side door on CSU351, 356 and 362



Bottle located in side hatch on CSU370



Bottle located in rear compartment of CSU456SQ



Options

Quick disconnect for water bottle fits both one and two liter bottles. Makes changing bottles a snap. PN: 20-5755

1 liter Water Bottle PN: 20-5400
2 liter Water Bottle PN: 20-5386

Monitor Mounts

Better Cable Management Means Less Mess & Clutter.



Boyd monitor mounts are designed for Boyd's CSUs to minimize external exposed cabling between monitor and computer. The video signal cable and power cord can be routed via the 7½" monitor mount riser* through a hole in the countertop to the computer storage compartment and internal power receptacles. This means fewer cables to interfere with your work surface and unsightly clutter.

FS-14a Monitor Mount

New model modifications are 2"-3" higher than previous models.

SINGULAR MOUNTS



FS-1 Flat Screen and iPad
Compact and adjustable, two tilt joints, 50° tilt, 360° pivot.

Putty PN: 60-0621,
Black PN: 60-0621B



FS-9a Flat Screen
W / Mini Keyboard Tray* Same features as the FS-1 plus mini keyboard: 12" x 17 1/4"

Putty PN: 60-0643,
Black PN: 60-0643B*



FS-14a Flat Screen
W / Full Size Keyboard Tray and Mouse Pad* Same features as the FS-1 Plus full size keyboard tray: 19" x 71/4"

Putty PN: 60-0641,
Black PN: 60-0641B*

DUAL MONITOR MOUNTS



FS-21 Flat Screen
Parallel support for two 22" monitors, 50° tilt, any direction, 5" forward adjustment, 5" height adjustment, 360° pivot.

Putty PN: 60-0636,
Black PN: 60-0636B



FS-29a Flat Screen
W / Mini Keyboard Tray* Same features as the FS-21 plus mini keyboard option.

Putty PN: 60-0645,
Black PN: 60-0645B



FS-24a Flat Screen
W / Full Size Keyboard Tray* Same features as the FS-21 W / Full size keyboard tray.

Horizontal:
Putty PN: 60-0644, Black PN: 60-0644B
Vertical:
Putty PN: 60-0647, Black PN: 60-0646B

• NEW APPLE PRODUCTS USE FS-14a



FS-5 Apple Monitor Mount
Same features as the FS-15 without the keyboard tray. Professionally conceals the desk stand.

Putty PN: 60-0635,
Black PN: 60-0635B



FS-15 Apple Monitor Mount
W / Full Size Keyboard Tray and Mouse Pad Built to hold the weight of up to 27" monitor. No need to remove the stand.

Putty PN: 60-0614,
Black PN: 60-0614B



SM-2a Laptop Mount
Swivel stand, sturdy and convenient.

Putty PN: 60-0642,
Black PN: 60-0642B

Examination Lights

Leading The Way With The Latest Technologies.

Boyd's LED Exam Lights provide the latest in operatory light technology. Each model emits clear and natural white light for the best visibility of the oral cavity by using LEDs for cool, power efficient and reliable operation. The diode technology designed into our models emits light in the white to IR range of the light spectrum, avoiding the UV range which could affect UV cure bonding compounds.

The C500 Camera Light System includes a fully integrated 30X zoom, High Definition Camera for capturing video and still images for consultation, records, training or other similar uses. The camera comes equipped with a wireless remote control for ease of use while taking video or images. The system can be used with any video or still image software and practice management systems.

Shared features of the C-series LED Exam Lights:

- Natural white color (5000K)
- Variable light intensity
- High color rendering index
- Optimal focal distance 25.5" to 27.5"
- Adjustable, sterilizer-safe hand grips
- Three axis head movement for optimum doctor and assistant functionality
- Available options include chair post, ceiling, and wall mounted



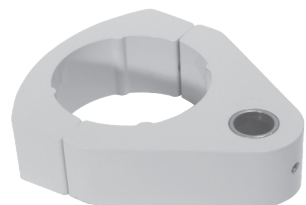
C300 features an Motion Sensor for power on/off, manual light intensity control up to 30,000 LUX and a 4 LED head measuring 12.8" x 8.7".
Putty PN: 600-4505
Black PN: 600-4505B



C500 features Motion Sensor for power on/off, manual light intensity control up to 50,000 LUX, HD video camera and a 8 LED head measuring 11" x 6.5".
Chair Mount:
Putty PN: 600-4530 Black PN: 600-4530B
White PN: 600-4530W
Ceiling Mount White PN: 600-4535W



C600 features Motion Sensor, on / off switch, Touch Panel for easy LED adjustable color temperature, and one-touch UV cure mode.
Putty PN: 600-4600
Black PN: 600-4600B



Post Mount Light post clamp, mounts to 2" post assembly
Putty PN: 20-5107
Black PN: 20-5107B



Rigid Folding Arms Aluminum 1" square x 12" long arm. 1/2" pin, 5/8" bushing.
Putty PN: 95-9108
Black PN: 95-9108B

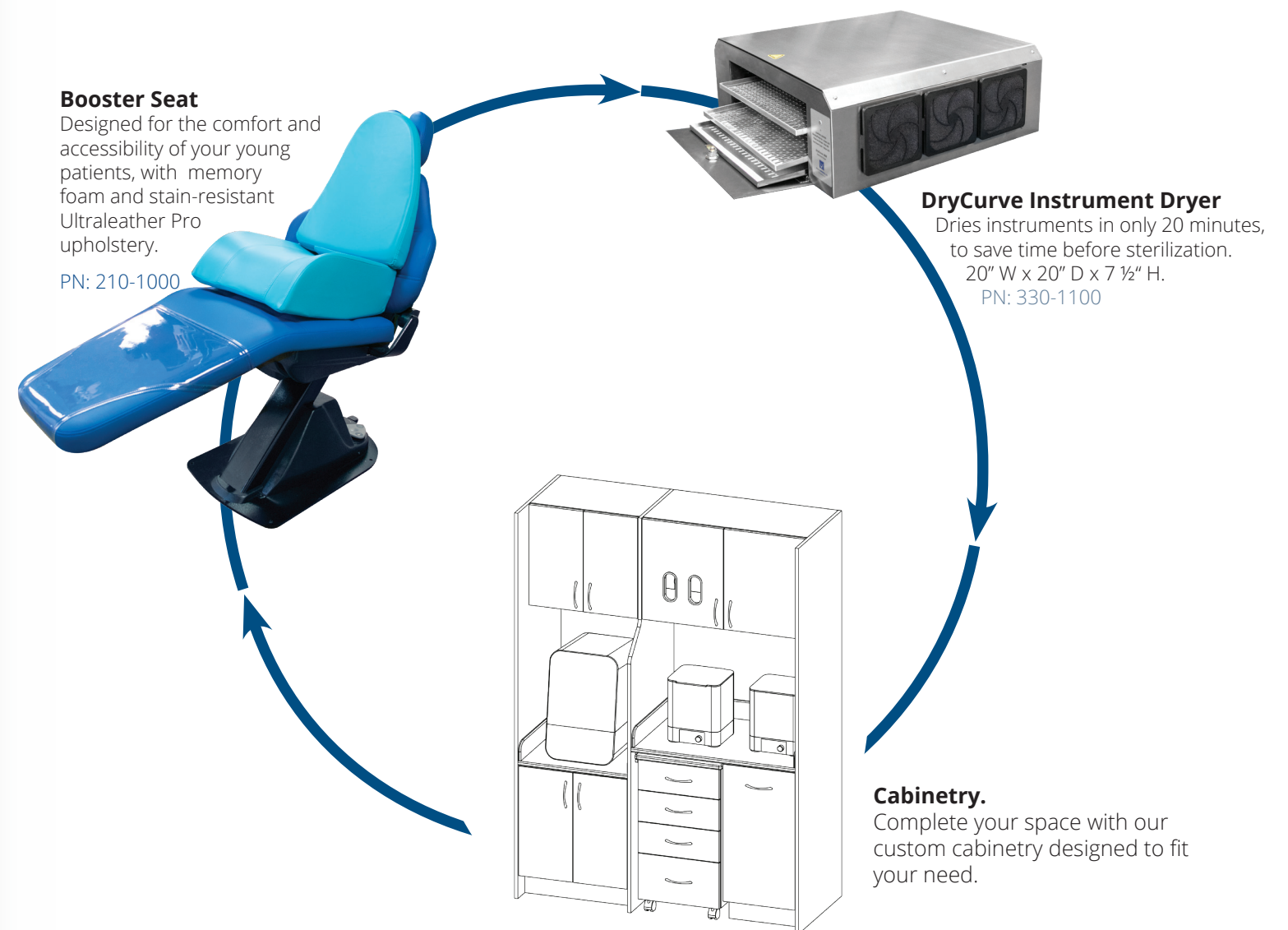


BT-280 Bracket Table Stainless steel 10"x15" tray, mounts on a standard Boyd light post. Post and chair mount assembly sold separately. Fits models M300X, M3000 series and M3010 series. Rigid arm mount includes post clamp with two arms.
Putty PN: 95-9139
Black PN: 95-9139B

Complete Your Practice

Add To The Comfort & Safety Of Your Space.

In our effort to continue providing fully-integrated solutions for your office projects, Boyd Industries offers an additional range of products that complement our equipment and cabinetry lines. These products, like all of our products, are designed with efficiency and durability in mind. Ask your sales representative how you can complete your practice with Boyd.



Ready to begin your debut or expansion project? For an office that you and your team will love for years to come, it has to be *Built by Boyd!* Contact your regional or dealer representative today for a free consultation and quote to get started!

Phone 727.471.5072 (local)
800.255.2693 (toll-free)

Web www.boydindustries.com
Email sales@boydind.com

We look forward to helping you build your dream office!

Compare Products

	M300X	M3000FB	M3000LS	M3010FB	M3010LS	E530	E535	P3000LS	PB4000	PB4001
WEIGHT CAPACITY										
Weight Capacity (lbs)	500	500	500	500	500	350	350	500	350	350
DIMENSIONS										
Minimum Seat Height (inches) From highest point of seat frame	25.5	25.5	20	25.5	20	19	19	20	27.5	27.5
Maximum Seat Height (inches) From highest point of seat frame	25.5	25.5	26	27.5	26	26	26.5	26	27.5	27.5
Width Without Arms (inches)	24.25	24.25	24.25	24.25	24.25	20	20	-	26	26
Nominal Length (inches)	70.5	70.5	71	63.5	63	58	58	71	76.5	76.5
POWER REQUIREMENTS										
Amps	10	10	10	10	10	N/A	8	10	N/A	N/A
230v AC Convertible	•	•	•	•	•			•	+	+
FEATURES										
Number of Motorized Functions	1	1	2	1	2	N/A	1	2	N/A	N/A
Steel Frame	•	•	•	•	•	•	•	•		
Putty or Black Trim	•	•	•	•	•	•	•	•	•	•
Non-Articulating Headrest (FH Models)	•	•	•	•	•	+	+	+	+	+
Single Articulating Headrest (AH Models)	+	+	+	+	+	+	+	•	•	•
Dual Articulating Headrest (LL Models)						•	•			
Choice of Headrests	•	•	•	•	•	•	•	•	•	•
Programmable Foot Control	•	•	•	•	•			•		
Auto Return to Home	•	•	•	•	•			•		
Safety Stop Feature	•	•	•	•	•			•		
120vAC Electrical Outlet	•	•	•	•	•			•	+	+
Vertical Column Base (6" Stroke)			•		•			•		
Vertical Column Base (8" Stroke)							•			
Pump Base						•				
Electric Hydraulic Base							•			
Seat Swivel	+	+	+	+	+			+		
Vinyl Upholstery/Standard Foam	•	•	•	•	•	•	•	•	•	•
Choice of Upholstery Styles	•	•	•	•	•	•	•	•	+	+
Detachable Upholstery	•	•	•	•	•	•	•	•		
Ultraleather™ Upholstery	+	+	+	+	+	+	+	+	+	+
Memory Foam	+	+	+	+	+			+		
Arm Rests	+	+	+	+	+	•	•	•		

• Standard Feature + Optional Feature

The Boyd Product Warranty

We Guarantee Our Products With Pride.



Montana Smiles
Orthodontics.

Our team of craftsmen and technicians fabricate and assemble Boyd products to the highest workmanship standards. Their attention to detail coupled with the products durability has distinguished Boyd as the premier Orthodontic and Pediatric Dental equipment product company in the industry.

Boyd Industries warrants its chair and cabinetry products against component and/or workmanship defects by offering a three year parts and one year labor warranty commencing on the invoice date of your equipment. The company reserves the right to repair or replace, at its sole discretion, any component or assembly deemed defective. The warranty will be voided if products are improperly maintained or installed or altered from its original design. Products distributed by Boyd carry the original equipment manufacturer's warranty.

Boyd will not be responsible for damage to product or office facilities caused by mishandling during transportation and unloading. All products must be inspected upon recipient with any damage noted with carrier for filing of damage claim.

CALIFORNIA PROPOSITION 65 WARNING:

This product can expose you to chemicals including cumene, nickel compounds and wood dust, which are known to the state of California to cause cancer; di-isodecyl phthalate (DIDP), which is known to the state of California to cause cancer, developmental toxicity and male reproductive toxicity; and lead and lead compounds, which are known to the state of California to cause cancer, developmental toxicity, male reproductive toxicity, and female reproductive toxicity. For more information, go to www.P65Warnings.ca.gov.

Built to Last. Built for You. Built by Boyd!

Boyd proudly serves the Orthodontic and Pediatric Dentistry industries and knows the unique requirements of running a successful practice. Our products are designed with both functional and ergonomic features to allow you and your staff to perform at the highest efficiency.

Innovation and quality of craftsmanship are what Boyd is all about.

When buying Boyd, you can be assured you will be receiving the highest quality equipment available on the market today.

Contact us for a design or equipment consultation, or visit our showrooms for tours and product demonstrations.

We look forward to supplying your present and future equipment needs.



12900 44th Street North Clearwater, FL 33762 • 800-255-2693

P 727.561.9292 | **F** 727.561.9393

Customer service 727.471.5072 | customerservice@boydind.com

Technical Service 727.471.5071 | techservice@boydind.com

www.boydindustries.com



Please recycle this catalog when no longer of use. Thank you!

Proudly designed and manufactured in the USA.



Wellkang Ltd
Suite B, 29 Harley Street
LONDON, W1G 9QR, U.K.
www.CE-Marking.EU

